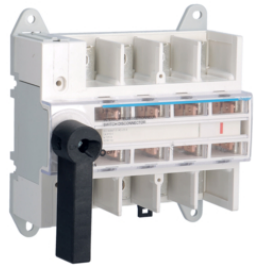




HAE410

## Load break switches visual breaking

Description	Pack qty.	Art No.
Load break switch visible break. 4P 100A	1	<b>HAE410</b>
Load break switch visible break. 4P 125A	1	<b>HAE412</b>
Load break switch visible break. 4P 160A	1	<b>HAE416</b>
Load break switch visible break. 3P 100A	1	<b>HAE310</b>
Load break switch visible break. 3P 125A	1	<b>HAE312</b>
Load break switch visible break. 3P 160A	1	<b>HAE316</b>



HA406N

## Load break switches visual breaking

Description	Pack qty.	Art No.
Load break switch visib.breaking 4P 125A	1	<b>HA406N</b>
Load break switch visib.breaking 4P 160A	1	<b>HA407</b>
Load break switch visib.breaking 4P 200A	1	<b>HA408</b>
Load break switch visib.breaking 4P 250A	1	<b>HA964N</b>
Load break switch visib.breaking 4P 400A	1	<b>HA966N</b>
LOAD BREAK SWITCH 3P 160A	1	<b>HA307</b>



HZC014

## Detachable handle

Description	Pack qty.	Art No.
Grey handle LBS 100-160A	1	<b>HZC014</b>
BLACK HANDLE FCS - LBS 20-63A	1	<b>HZC001</b>
Black handle FCS- LBS 100-630A	1	<b>HZC002</b>



HZC115

## Shaft extensions

Description	Pack qty.	Art No.
Shaft extension N°6 200mm LBS 100-160A	1	<b>HZC115</b>
Shaft extension N°6 320mm LBS 100-160A	1	<b>HZC116</b>
Shaft extension 200 mm FCS-LBS 80-250A	1	<b>HZC103</b>
Shaft extension 320 mm FCS-LBS 80-250A	1	<b>HZC104</b>
Shaft extension 200 mm FCS-LBS 63-630A	1	<b>HZC101</b>
Shaft extension 320 mm FCS-LBS 63-630A	1	<b>HZC102</b>



HZC311

## Auxiliary contacts

Description	Pack qty.	Art No.
Auxiliary contact 1C+1O LBS 20-160A	1	<b>HZC311</b>
Auxiliary contact 1C+1O ha100/160	1	<b>HZ022</b>
Auxiliary contact 2C LBS 20-160A	1	<b>HZC312</b>

## Single phase voltage sensing tap

Description	Pack qty.	Art No.
Single phase voltage sensing tap	1	<b>HZ1230</b>



HZ1230

## Terminal shields

Description	Pack qty.	Art No.
Terminal shrouds 3P LBS 100-160A	1	<b>HZC217</b>
Terminal shrouds 4P LBS 100-160A	1	<b>HZC218</b>
Terminal covers ha407	1	<b>HZ062</b>
CAPOT CACHE BORNE POUR HA964N	1	<b>HZ094</b>
Terminal Shrouds for HA964N 3P	1	<b>HZ095</b>
Terminal Shrouds for HA966N 3P	1	<b>HZ096</b>



HZC217

## Terminal shrouds

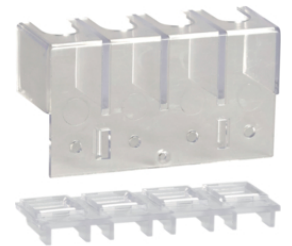
Description	Pack qty.	Art No.
Connection terminal ha406N / ha407	1	<b>HZ082</b>
Collar terminals for HA964N 3P	1	<b>HZ093</b>
Connection terminal ha307	1	<b>HZ072</b>



HZ082

## Terminal shield & shroud

Description	Pack qty.	Art No.
Terminal covers+connect.terminal ha407	1	<b>HZ092</b>



HZ092