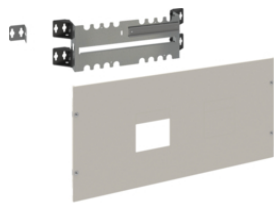


UC200

Equipment kits for modular devices

Description	Pack qty.	Art No.
MCB kit, quadro.system, 150x350 mm	2	UC200
MCB kit, quadro.system, 150x600 mm 24M	2	UC201
MCB kit, quadro.system, 200x600 mm	2	UC205
Kit for segr.mod.dev.qua.sys 600x200	1	FN6020MD
Kit for segr.mod.dev.qua.sys 800x200	1	FN8020MD



UC263P

Equipment kits for MCCBs H3+

Description	Pack qty.	Art No.
Kit 1xMCCB H3+P160 Quadro 348x298mm	1	UC133P
Hor. kit 1xMCCB H3+P160 Quadro 598x190mm	1	UC162P
Ver. kit 2xMCCB H3+P160 Quadro 598x298mm	1	UC163P
Ver. kit 2xMCCB H3+P160 Quadro 598x298mm	1	UC163PI
Hor. kit 1xMCCB H3+P160 Quadro 798x198mm	1	UC182P
Ver. kit 3xMCCB H3+P160 Quadro 798x298mm	1	UC183P
Ver. kit 2xMCCB H3+P160 Quadro 798x298mm	1	UC183PI
Ver. MCCB kit Quadro H3+P250 348x298mm	1	UC233P
Vert. MCCB kit Quadro H3+P250 348x398mm	1	UC234PR
MCCB hor. kit Quadro H3+P250 598x198mm	1	UC262PR
2xMCCB ver. kit Quadro H3+P250 598x298mm	1	UC263P
2xMCCB ver. kit Quadro H3+P250 598x298mm	1	UC263PI
2xMCCB ver. kit Quadro H3+P250 598x298mm	1	UC263PM
2xMCCB ver. kit Quadro H3+P250 598x398mm	1	UC264PR
MCCB hor. kit Quadro H3+P250 798x198mm	1	UC282PR
3xMCCB ver. kit Quadro H3+P250 798x298mm	1	UC283P
2xMCCB ver. kit Quadro H3+P250 798x298mm	1	UC283PI
2xMCCB ver. kit Quadro H3+P250 798x298mm	1	UC283PM



UC233EM

Equipment kits for non modular devices

Description	Pack qty.	Art No.
3 MCB 92x92 kit, quadro.sys., 600x200 mm	1	UC233EM
2 MCB 92x92 kit, quadro.sys., 600x200 mm	1	UC234EM
3 MCB 92x92 kit, quadro.sys., 800x200 mm	1	UC243EM



UC209

Equipment kits for terminals

Description	Pack qty.	Art No.
MCB kit, quadro.system, 150x600 mm	2	UC209

Full front plates 250mm

Description	Pack qty.	Art No.
Moun. pl. fr. plate quadro.sy. 75x350 mm	2	UC220
Moun. pl. fr. plate quadro.sy. 50x350 mm	2	UC221
Moun. pl. fr. plate quadro 150x350 mm	2	UC222
Moun. pl. fr. plate quadro 200x350 mm	2	UC223
Moun. pl. fr. plate quadro 300x350 mm	2	UC224
Moun. pl. fr. plate quadro 400x350 mm	2	UC225
Moun. pl. fr. plate quadro 600x350 mm	2	UC226
Moun. pl. fr. plate quadro 800x350 mm	2	UC227



UC220

Full front plates 500mm

Description	Pack qty.	Art No.
Moun. pl. fr. plate quadro.sy. 75x600 mm	2	UC230
Moun. pl. fr. plate quadro.sy. 50x600 mm	2	UC231
Moun. pl. fr. plate quadro 150x600 mm	2	UC232
Moun. pl. fr. plate quadro 200x600 mm	2	UC233
Moun. pl. fr. plate quadro.s. 300x600 mm	2	UC234
Moun. pl. fr. plate quadro 400x600 mm	2	UC235
Moun. pl. fr. plate quadro 600x600 mm	2	UC236
Moun. pl. fr. plate quadro 800x600 mm	2	UC237
Moun. pl. fr. plate quadro 100x600 mm	2	UC239



UC230

Full front plates 600mm

Description	Pack qty.	Art No.
Plain fr. panel, quadro sys., 300x600 mm	1	FN623
Plain fr. panel, quadro sys., 600x600 mm	1	FN625



FN623

Adjustable DIN rails

Description	Pack qty.	Art No.
Adjust. DIN rail quadro.system W500 mm	2	UC951



UC951

Perforated mounting plates

Description	Pack qty.	Art No.
Perf. dished plate quadro.sy. 300x500 mm	1	UC960
Perf. dished plate quadro.sy. 450x500 mm	1	UC962
Perf. dished plate quadro.sy. 600x500 mm	1	UC964



UC962



UC969

Clips nuts and M5 screws

Description	Pack qty.	Art No.
Clips nut and screws, quadro, M5	25	UC969



UC268

Hinges for front plates

Description	Pack qty.	Art No.
Hinge, quadro, 2 pieces	10	UC268

Front panel with louvers IP31

Description	Pack qty.	Art No.
Plate louvers quadro 600x100 mm	1	UC6010PL
Plate louvers quadro 600x200 mm	1	UC6020PL
Plate louvers quadro 800x100 mm	1	UC8010PL
Plate louvers quadro 800x200 mm	1	UC8020PL