

gala

gala enclosures 2

Accessories gala 3

**1 row, 12 modules**

Description
Enclosure, volta, surface, 1x12MOD, IP30

Pack Art No.
Qty. **VA12D**

VA12D

**2 rows, 24 modules**

Description
Enclosure, volta, surface, 2x12MOD, IP30

Pack Art No.
Qty. **VA24D**

VA24D

**3 rows, 36 modules**

Description
Enclosure, volta, surface, 3x12MOD, IP30

Pack Art No.
Qty. **VA36D**

VA36D

**4 rows, 48 modules**

Description
Enclosure, volta, surface, 4x12MOD, IP30

Pack Art No.
Qty. **VA48D**

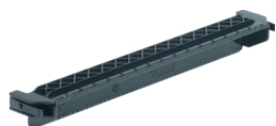
VA48D

**Keylock**

Description
VOLTA LOOK FOR STANDARD DOOR HANDLE

Pack Art No.
Qty. **VZ303**

VZ303

**Crossbar for QuickConnect terminal**

Description
Terminal base, volta, QC terminal

Pack Art No.
Qty. **VZ711**

VZ711

**Connection assembly 1 phase + neutral**

Description
Terminal, volta, add.terminal

Pack Art No.
Qty. **VZ403**

VZ403

**Connection assembly 3 phases + neutral**

Description
Terminal, volta, add.terminal

Pack Art No.
Qty. **VZ428**

VZ428

**Blanking strip**

Description
Cover strips, universal, for 12 module

Pack Art No.
Qty. **P012**

P012