

Sm.distr, golf, surface, 18M, transp. door

Product Datasheet

**Architecture**

Fixing mode	surface-mounting
-------------	------------------

**Functions**

With a pipe-in lead	yes
---------------------	-----

**Compatibility**

Compatible with DIN rail mounting	yes
-----------------------------------	-----

**Main electrical features**

Nominal voltage	400 V
-----------------	-------

**Electric current**

Rated current	63 A
---------------	------

**Cover, door**

Type of door closing	Latch
Identification od protection index	40
Interlockable	no
Cover type	Closed (plain)
Door locking	without
Door leave	single
Door quantity	1
Cover type	Door
Transparent cover or door	yes

**Materials**

Colour	pure white
Colour	white
RAL colour	RAL 9010 - Pure white
Material	plastic
Type of surface treatment	untreated

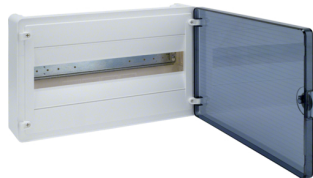
**Dimensions**

Depth of installed product	99 mm
Internal depth	99 mm
Height of installed product	252 mm
Width of installed product	390 mm
Width in division units	18

**Installation, mounting**

Suitable for outdoor use	no
--------------------------	----

VS118TF



VS118TF1

## Accessories included

Mounting plate included	no
With lock	no

## Equipment

Number of rows	1
Quantity of section in width	1
Quantity of rails	1
Can be accessorized	yes
Extension possible	yes

## Standards

GWT Glow wire test	650 °C
European directive WEEE	not concerned

## Safety

IK protection code against mechanical impacts	07
Protection index IP	IP40
Protection class	isol.class II
Halogen free	yes
Ultraviolet resistant	no

## Use conditions

Operating temperature	-25...40 °C
-----------------------	-------------