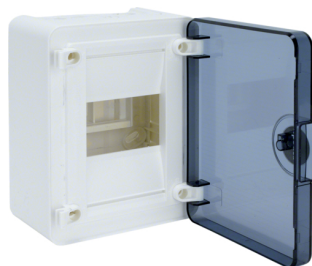




VS104TJ



VS104TJ1

Sm.distr, golf, surface, 4M, transp. door

Product Datasheet

**Architecture**

Fixing mode surface-mounting

**Functions**

With a pipe-in lead yes

**Compatibility**

Compatible with DIN rail mounting yes

**Main electrical features**

Nominal voltage 400 V

**Electric current**

Rated current 63 A

**Cover, door**

Type of door closing Latch

Identification of protection index 40

Interlockable no

Cover type Closed (plain)

Door locking without

Door leave single

Door quantity 1

Cover type Door

Transparent cover or door yes

**Materials**

Colour pure white

Colour white

RAL colour RAL 9010 - Pure white

Material plastic

Type of surface treatment untreated

**Dimensions**

Depth of installed product 99 mm

Internal depth 99 mm

Height of installed product 184 mm

Width of installed product 138 mm

Width in division units 4

**Installation, mounting**

Suitable for outdoor use no

## Accessories included

Mounting plate included	no
With lock	no

## Equipment

Number of rows	1
Quantity of section in width	1
Quantity of rails	1
Can be accessorized	yes
Extension possible	yes

## Standards

GWT Glow wire test	650 °C
European directive WEEE	concerned

## Safety

IK protection code against mechanical impacts	IK07
Protection class	isol.class II
Halogen free	yes
Ultraviolet resistant	no

## Use conditions

Operating temperature	-25...40 °C
-----------------------	-------------